

# GCAM Dashboard

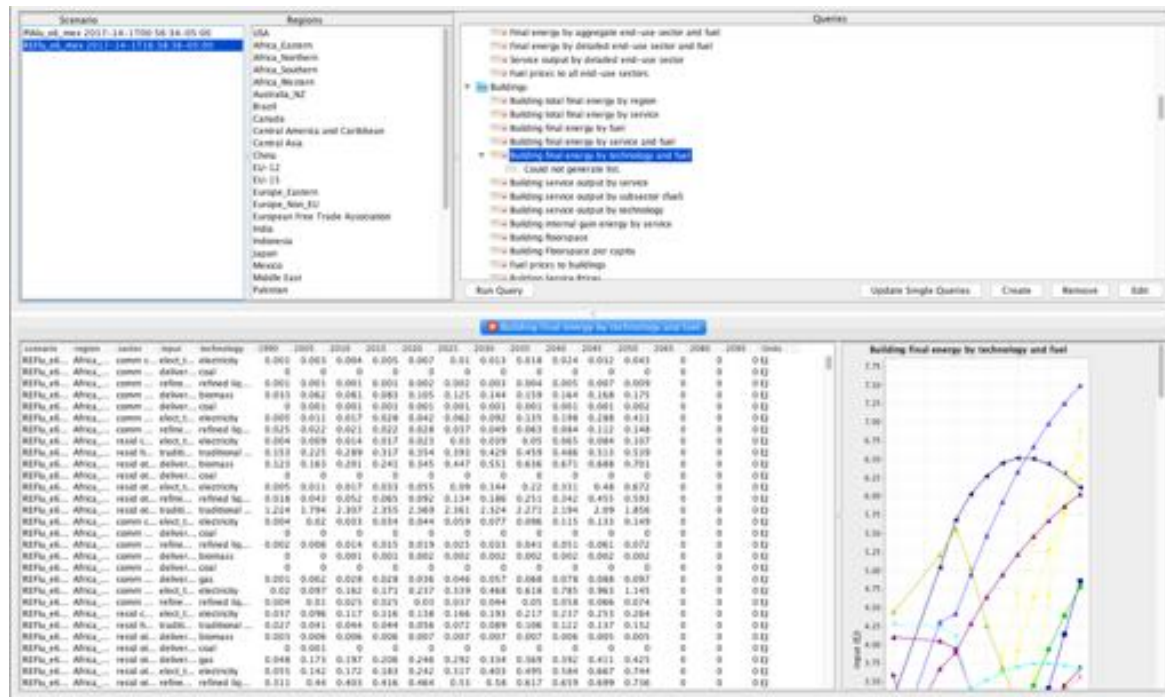
An Interactive  
Scenario Explorer

Caleb Braun

Oct 17, 2018



# Why a GCAM Dashboard?



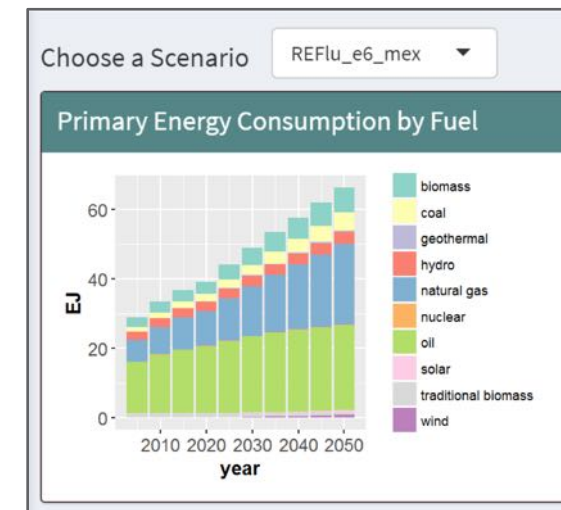
The GCAM model interface

- Explore results visually
- Quickly compare GCAM scenarios
- Share with non-GCAM experts

# Purpose:

Provide an interactive, web-based visualization experience to explore GCAM data from one or more scenarios.

scenario	region	fuel	1990	2005	2010	2015	2020
PIAlu_e6...	USA	a oil	33.959	40.613	35.765	36.412	37.214
PIAlu_e6...	USA	b nat...	18.201	21.389	22.97	23.821	25.301
PIAlu_e6...	USA	c coal	19.529	22.693	20.923	23.442	24.2
PIAlu_e6...	USA	d bio...	2.616	2.889	2.799	2.593	3.303
PIAlu_e6...	USA	e nucl...	2.201	2.919	3.02	3.193	3.274
PIAlu_e6...	USA	f hydro	0.983	0.982	0.945	0.954	0.964
PIAlu_e6...	USA	g wind	0.011	0.064	0.343	0.453	0.535
PIAlu_e6...	USA	h solar	0.002	0.004	0.014	0.028	0.042
PIAlu_e6...	USA	i geot...	0.058	0.06	0.063	0.115	0.158
PIAlu_e6...	USA	water...	1.567	1.792	1.55	1.563	1.584
PIAlu_e6...	USA	water...	5.138	5.874	5.081	5.123	5.194
REFlu_e6...	USA	a oil	33.959	40.613	35.765	36.412	37.302
REFlu_e6...	USA	b nat...	18.201	21.389	22.97	23.821	25.404
REFlu_e6...	USA	c coal	19.529	22.693	20.923	23.442	25.063
REFlu_e6...	USA	d bio...	2.616	2.889	2.799	2.593	3.108
REFlu_e6...	USA	e nucl...	2.201	2.919	3.02	3.193	3.302
REFlu_e6...	USA	f hydro	0.983	0.982	0.945	0.954	0.964
REFlu_e6...	USA	g wind	0.011	0.064	0.343	0.453	0.546
REFlu_e6...	USA	h solar	0.002	0.004	0.014	0.028	0.044
REFlu_e6...	USA	i geot...	0.058	0.06	0.063	0.115	0.163
REFlu_e6...	USA	water...	1.567	1.792	1.55	1.563	1.585
REFlu_e6...	USA	water...	5.138	5.874	5.081	5.123	5.206



# Explore a Scenario



# Explore a Scenario

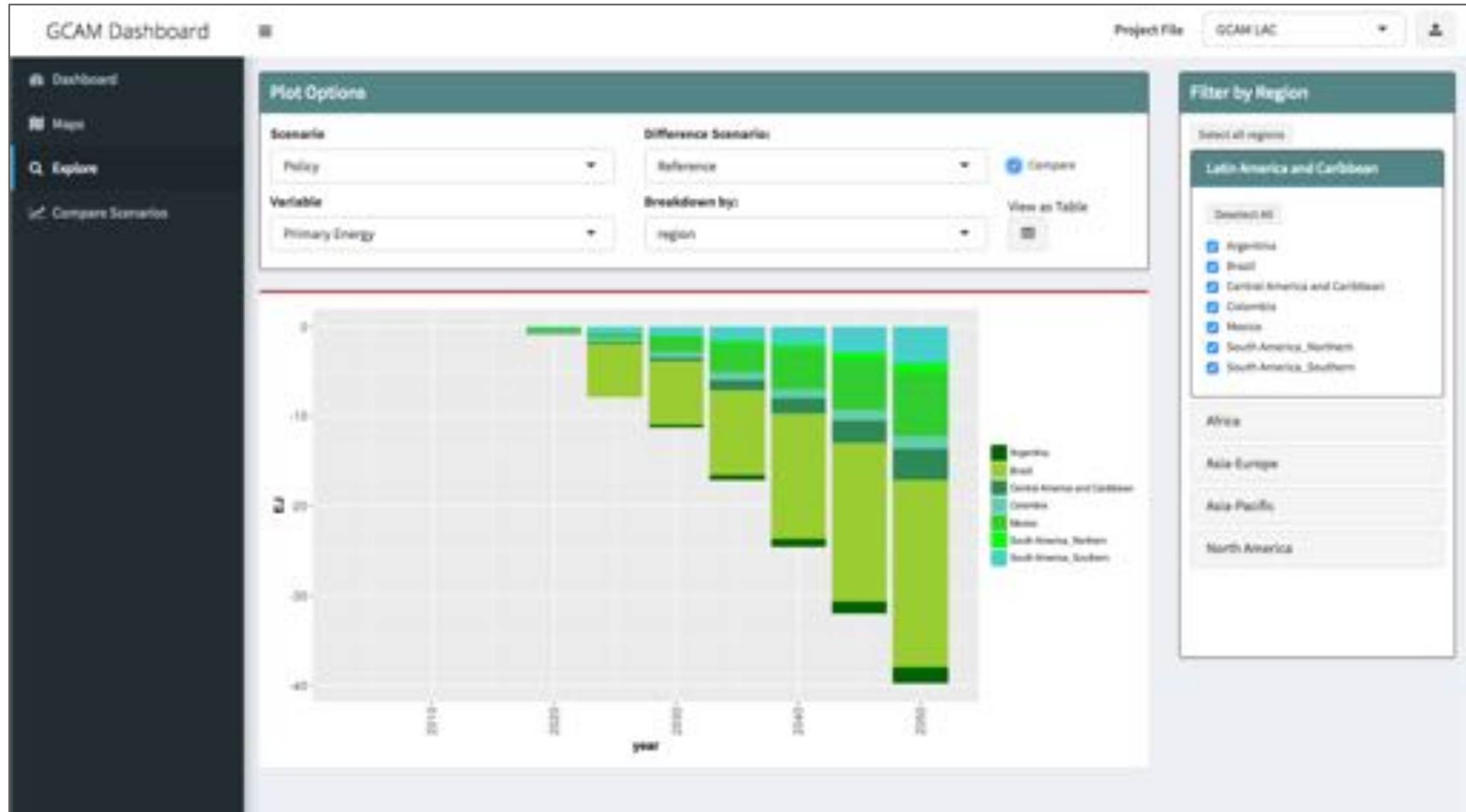




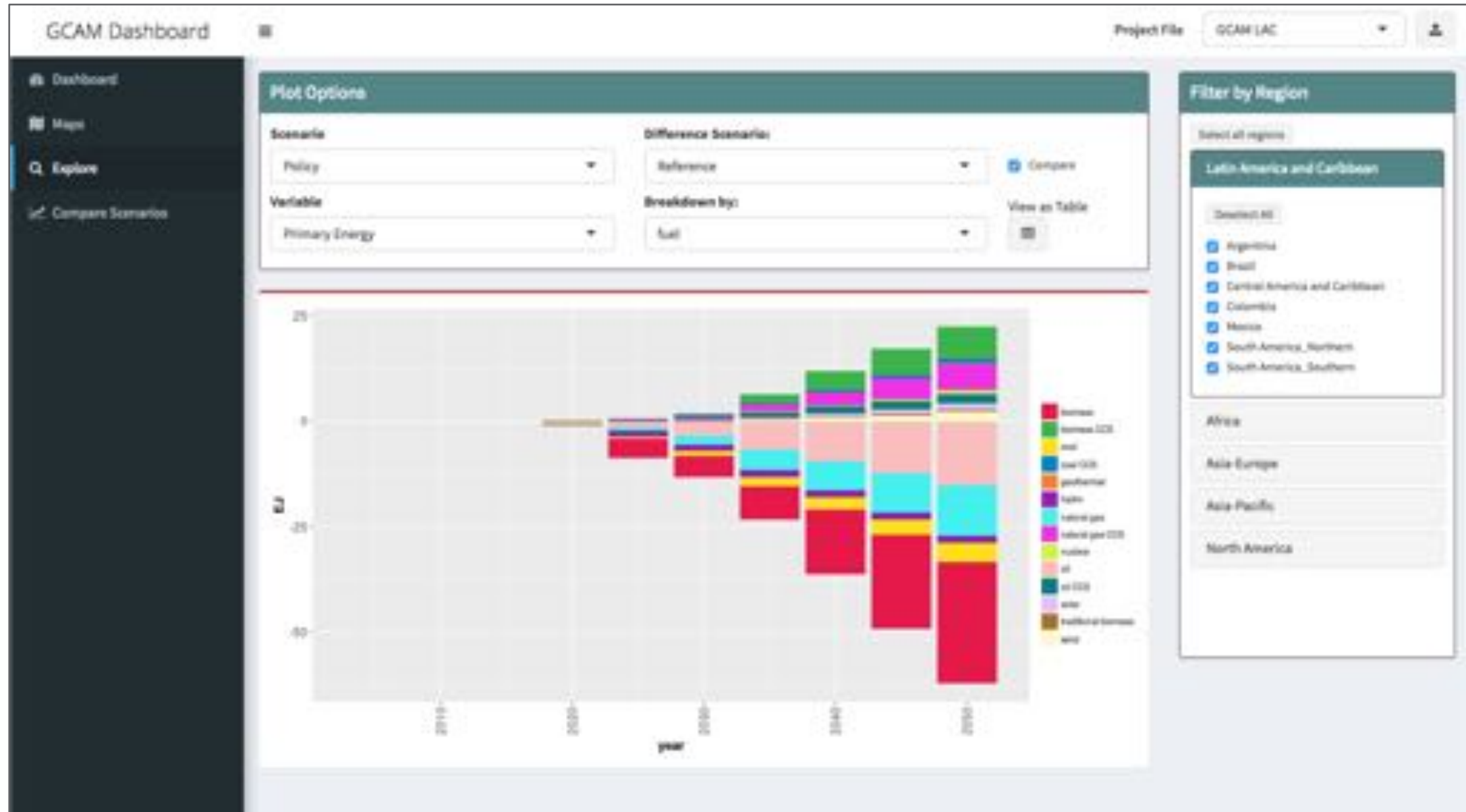
# Explore a Scenario



# Compare Two Scenarios



# Compare Two Scenarios

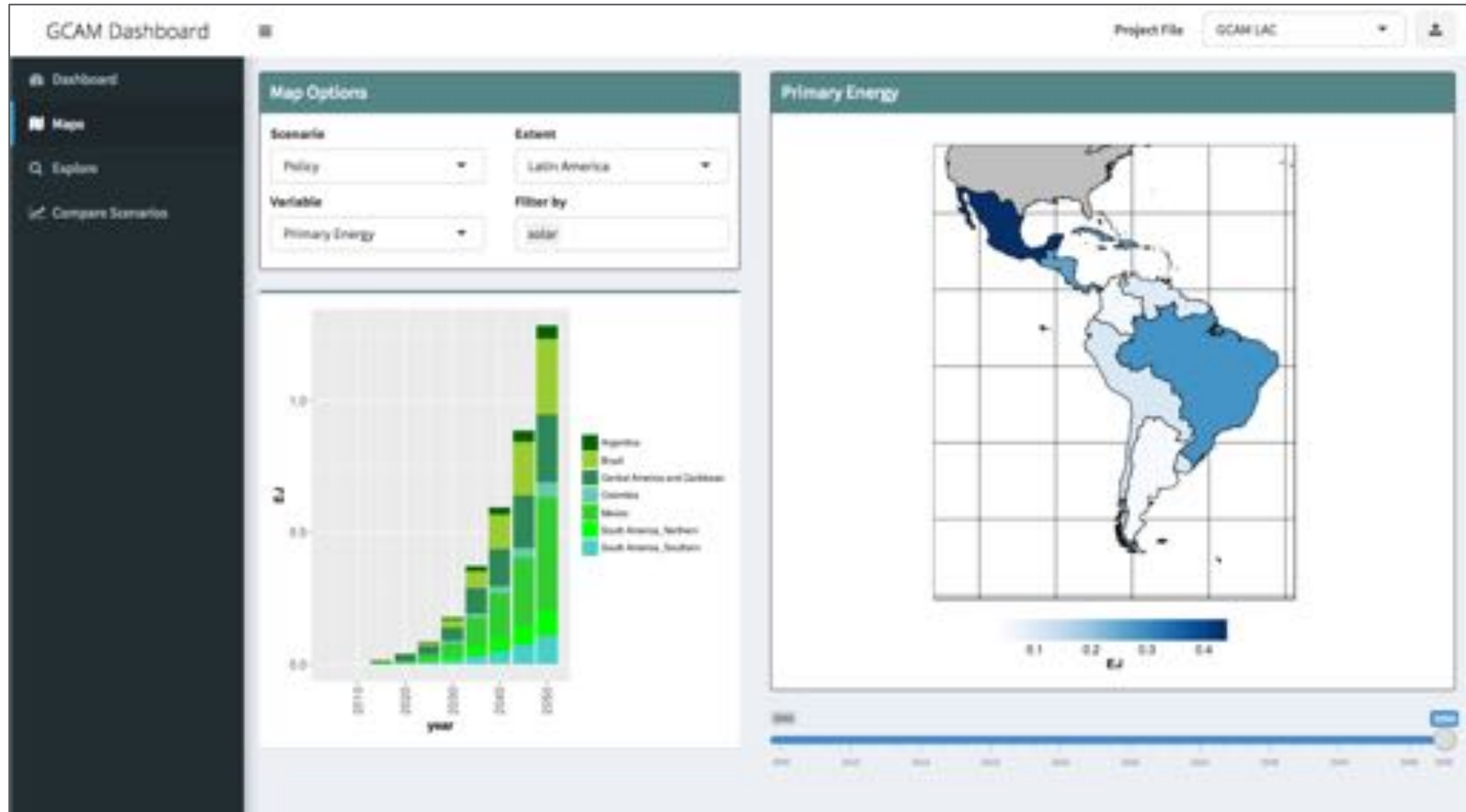




# Build Maps with Your Scenario



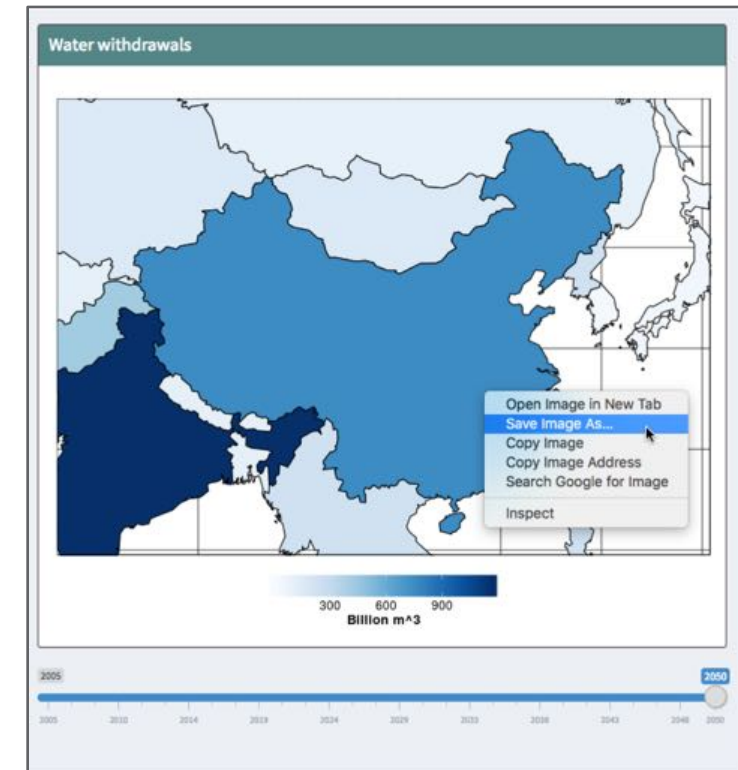
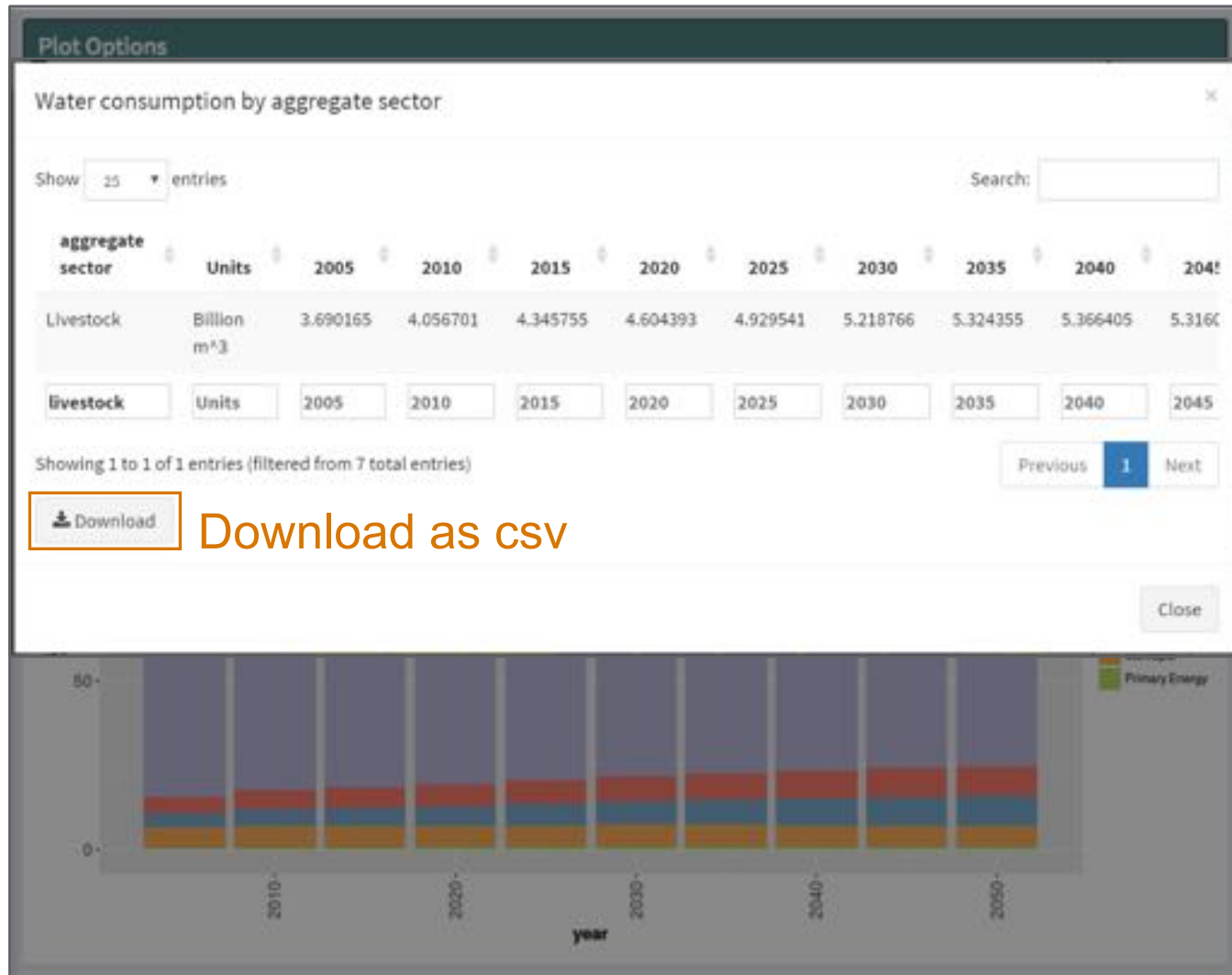
# Build Maps with Your Scenario



# Compare Multiple Scenarios



# Download Plots and Data







Try it out!

[bit.ly/gcamdashboard](https://bit.ly/gcamdashboard)

Download:

[github.com/JGCRI/GCAM-LAC-dashboard](https://github.com/JGCRI/GCAM-LAC-dashboard)

# Thank you

Questions?

Come to the GCAM Ecosystem Breakout Session  
4th floor ESSIC class room, 1pm-2:50pm